



# AERMACCHI M346 ADVANCED TRAINER

Lighting Equipment



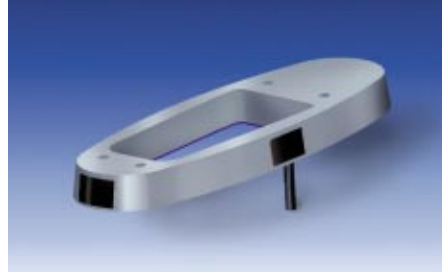
# GOODRICH LIGHTING EQUIPMENT ON THE AERMACCHI M346

## EXTERIOR LIGHTS

---



**Strobe Light, white**  
2LA 002 760-52



**IR Strobe Light**  
2LA 455 400-00



**Power Supply**  
8ES 002 769-10



**Cables**  
8KA 412 984-00/-01



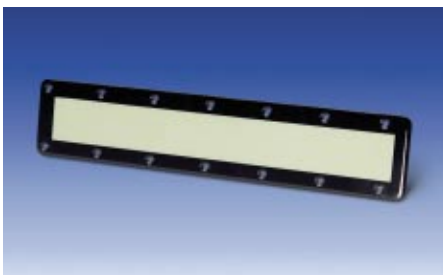
**HID Taxi Light**  
1X0 455 100-00



**HID Landing Light**  
1X0 455 036-00



**HID Power Supply  
with Cable**  
8ES 455 101-10  
8KA 410 661-00



**Formation Light FWD**  
2LA 006 608-04



**Formation Light AFT**  
2LA 005 094-50



**Power Supply/Dimmer**  
8ES 455 420-00



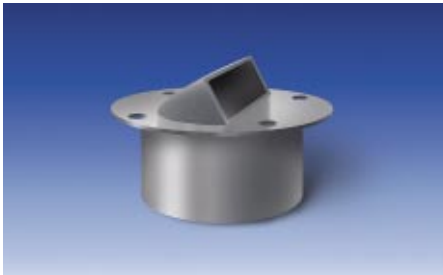
**LED Navigation Lights**  
**(NVIS friendly red/green and IR)**  
2LA 006 417-30  
2LA 006 418-30



**LED Tail Position Light**  
**(NVIS friendly white and IR)**  
2LA 006 419-18



**Flasher/Dimming Unit**  
8ES 455 418-00



**Aerial Refueling Light (NVIS friendly)**  
2LA 455 421-00



**Goodrich Hella Aerospace  
Lighting Systems GmbH**  
Bertramstrasse 8  
59557 Lippstadt/Germany  
Tel.: +49 2941 7676-0  
Fax: +49 2941 7676-8432  
Sita: PADHECR

**North American Operations:  
Goodrich Hella Aerospace  
Lighting Systems, Inc.**  
129 Fairfield Street  
Oldsmar, FL 34677  
Tel.: +1 813 891-7100  
Fax: +1 813 855-5572

<http://www.hella.goodrich.com>  
[info@hella.goodrich.com](mailto:info@hella.goodrich.com)

Aermacchi/TA/Sep 2003

The Goodrich name, logotype and symbol are registered trademarks of Goodrich Corporation